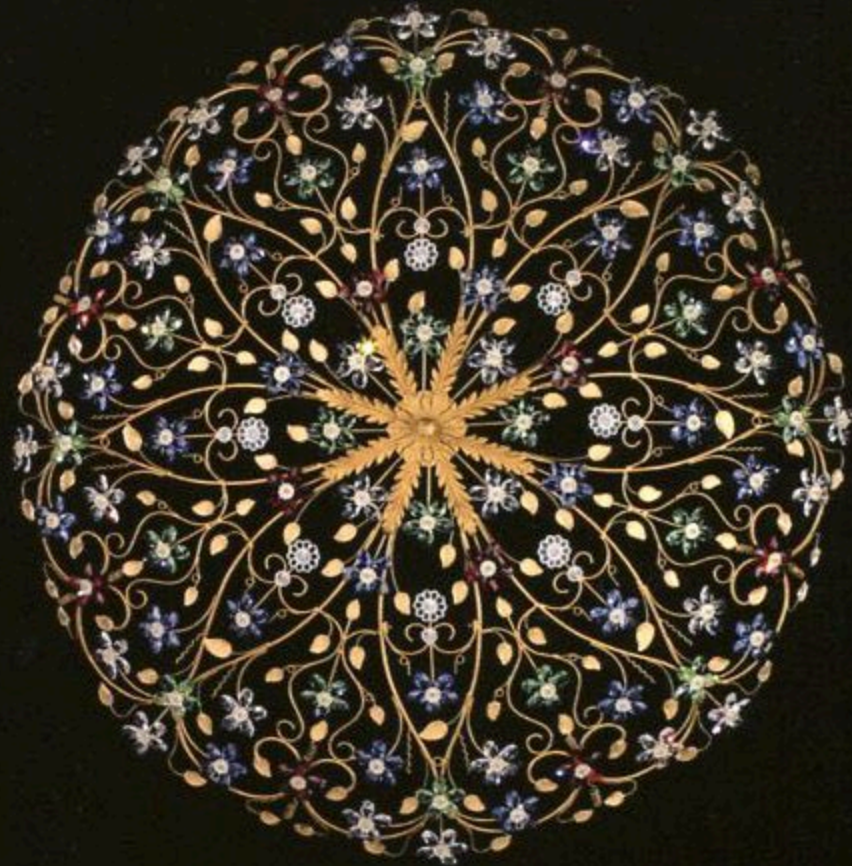


One-thousand lights of gold and crystal

Lamps, chandeliers,
table lamps, and wall
lights by **G. Moscatelli**
to illuminate with class



IN THIS PAGE:
right: Ceiling light
in wrought iron
and coloured
Swarovski crystals.
Below:
wall light in cast
polished brass.

When the lights go on, chandeliers, wall lights, ceiling lamps and table lamps suddenly become the focus of attention in any setting, spurring new sensations of both light and dark.

G. Moscatelli of Milan evolved from a small workshop into a corporation during the 1950s, producing classic lighting fixtures characterized by sophisticated craftsmanship in polished brass and wrought iron for more than eighty years and three generations. Modern equipment and exclusive moulds guarantee the production of lamps and lighting fixtures with a striking creative impact, which can also be customized with personalized details or special effects, ranging from the new models designed for luxury hotels in Milan to the majestic restoration of the chandelier for the historic La Scala Opera House.



30-lights Empire-style chandelier;
reproduction of an antique
model, all in heavy French sand cast brass,
chiselled by hand, with gold-plating of up
to 24 carats, embellished
with hand-cut Bohemian crystals.
Dimensions: h 270 cm, Ø 185 cm.